



BANTRAK Newsletter

Volume 32, Issue 8
August 2018

The Engineer's Cab: Martin Myers

The 14th annual N Scale Weekend in Altoona is over. We assembled a 17 x 44 foot NTRAK layout this year. Set up took a little longer than planned due to some car trouble on the way up. We still had the layout up and running in time for our outing to the local Hoss's restaurant. The T-TRAK guys were up and running early with a large U-shape layout as well.

We managed to make a few modifications. Several modules were connected with our new adjustable Kato tracks. The idea looks like a success. I can't wait to have them all done so we can leave the old track boxes in the trailer.

Trains were running all day on Saturday and Sunday. I think every body got their fill of running trains on the layouts. This year, Mike Phillips did not have the usual Saturday evening auction. I don't really think it was missed. Instead, there was a silent auction held on Sunday. There were some very nice offerings on the tables and I believe this method went over well.

Moving on, our next show will be the October Scale Show. Paul has volunteered to coordinate this show. He has arranged with Northern Virginia NTRAK to do a joint layout. There is a whopping 50 x 100 foot space available for this layout. He plans two loops joined by a spine with our oNetrak modules branching off of the spur. Red line will be a joint track with DCC only for control. This will include the oNetrak section as well. Blue and Yellow on our loop will be available for DC or DCC power by runner's choice.

At our last meeting Paul Diley volunteered to take over the second half of our raffle layout construction. Several structures are being constructed as well. Thanks to Al Potter for getting the layout platform built, track laid, and land forms roughed out. He also came up with this year's concept, which in my book is the hardest part of building any layout.

We will not be meeting in August due to schedule conflicts and quite frankly lack of a meeting location. A location for our September meeting is needed. Volunteers are welcome. Our October meeting will be held at the Scale Show on Sunday.

With summer rapidly coming to an end it is also time to think about our annual Christmas Layout. A coordinator and co- coordinator(s) are needed for this show. There is a wealth of knowledge available through our members so any one who wants to step up will not be out there on their own. Send me an email if interested. I will be making contact with the museum so you don't have to worry about that.

Happy Modeling!

Martin

In the issue...

<i>The Engineer's Cab</i>	<i>1</i>
<i>T-Trak Update</i>	<i>2</i>
<i>Altoona</i>	<i>3-4</i>
<i>Business Trip Building</i>	<i>5</i>
<i>New Members</i>	<i>6</i>
<i>Cars for sale</i>	<i>7</i>
<i>Trains Spotting</i>	<i>8</i>
<i>Calendar</i>	<i>9</i>

Next Meeting...

September 16th



T-Trak Update & Editorial: Chris Hyland

Altoona is over and much fun was had by all. Thanks to my co coordinator Dave Clyde for help pulling it off and to all the T-Trakers who came out to run and support the layout. Although it was “Officially” a S&P layout, rest assured it was Bantrak at it’s heart. Also welcome aboard Tim Laswell to the T Trak group. Hope to be seeing you at events in the future. Ed Hyland survived the event and is doing fine. Now all I have to do is unpack.

Yes, we are starting to get ready for the last part of the year. And it looks like it is going to be a busy one. Gaithersburg, both the community museum and the artifacts show, Ranson, W.V., Timonium, Rockville Lions Club, Kensington, and Sykesville. And then we get to the Christmas season. Greenbergs. So lace up your sneakers guys because it is going to be a wild ride.

So I have heard all about the doom and gloom on the horizon. That N scale took a big hit recently because of events beyond our control. I think that this will not kill off our hobby. They are events beyond our control. But I feel like with everything else, nature will fill the void.

As to the recurring “I’m King of T Trak” standards wars that seem to crop up with T Trak every six months or so, we are still masters of our own destiny so until I get my vote, I just ignore the fake National of N-Trak. Being part of BANTRAK, we are focused on doing N scale T Trak because that is what this club is about. That being said, I encourage people to try out more than N or Z. I believe that T Trak systems are for everybody and if a garden railroad club comes up with standards, then they should be encouraged to do so. What is T Trak? That is like saying “what is modular railroading?” Remember the Poff took over the world after N Trak designed it. Strip off the stuff of a lot of the HO groups modules out there and what do you got? An

N Trak module. I hope that someday T Trak will be the same. And even in N scale here at Casa Del Hyland we have gone places that one would have never thought of, Streetcar layouts, switching districts, themed layouts (remember all German Oktoberfest?) and one that no one could have ever imagined: the only T Trak subway system in the world. N scale trains running through tubes to get to underground stations. Who would have thought? So forget all the names and the vanity. Think of the hobby first. Heck, they might even do what an acquaintance of mine did, when he converted his HO standard gauge layout to On30. So leave your title at the door. T Trak is for everyone. And maybe it might someday save the world.

(just kidding, or am I?)

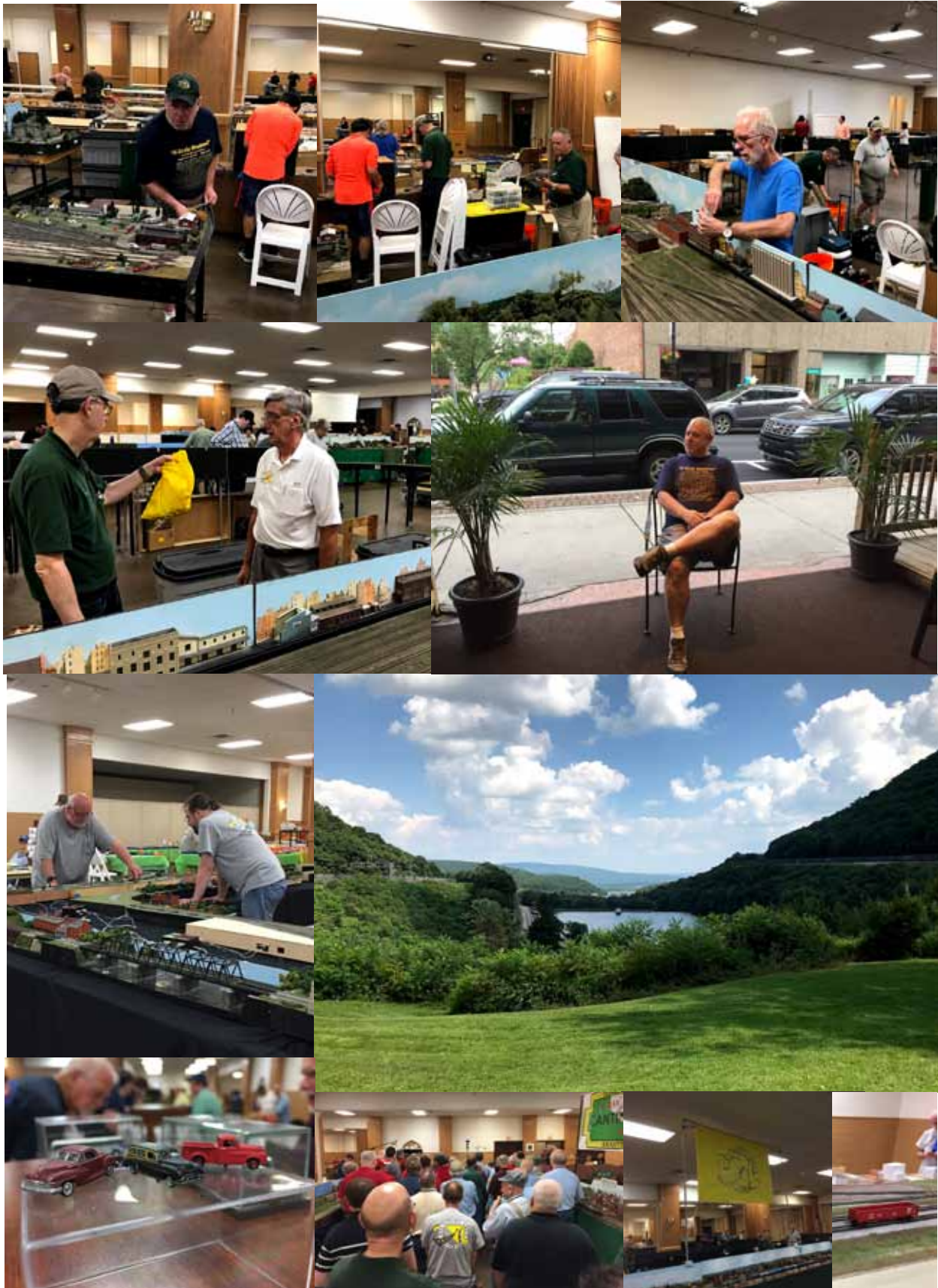
Seeing that the wiring suggestion has been put out there by the (n)ational group, we spent some time wrapping our heads around it at Altoona. So our scientists working deep in the basement of Clyde Labs in Baltimore have said that their wiring system isn’t so bad, fits our keep-it-simple idea, and that we should perhaps try it; if we don’t like it though and we keep going on with what we have now? But one of the goals that we have always had is that if your locomotive can kick over, we can run anything, DC or DCC and try to make sure that there is room for everyone out there. Because I think that some of the “old lady” German decapods that I own (now going into their 4th decade) are going to get new motors before they ever get DCC chips. Though I do now have some DB Mikados that do have chips in them. So fear not, if you got it, we will try and run it.

Chris

Altoona Highlights:



Altoona Highlights:



Business Trip N Scale Building: Bob Bunge

My work over the past several years has had me traveling a fair amount. Regardless what many think, after a while, business travel can become a drag.

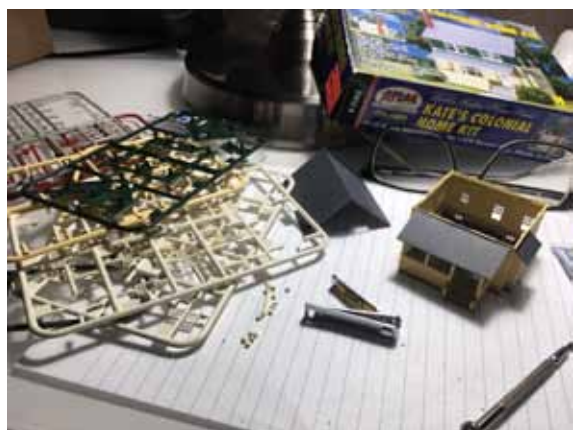
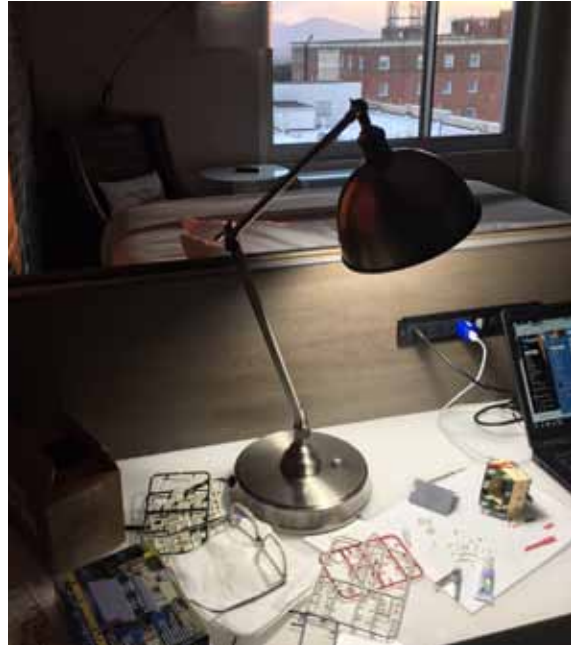
A few years ago, a trip took me to China. I ended up booked into a government operated hotel located on a quasi-government operated compound. Thank goodness for Google maps. It was apparent there wasn't much around the area and several evenings would be spent in the hotel room, perhaps without any English TV.

John and I were working on his under-the-bed layout at the time and he had requested a wooden trestle, which had arrived in the raw, toothpick and stick form. It turned out building the "bents" of the bridge was a good way to pass the time, and easy to bring home in the carryon bag. Not being able to bring knives or other sharp objects, I learned a nail clipper, a small screwdriver, superglue and a woman's fingerboard worked great and weren't flagged by TSA.

More recently a trip took me to Asheville, NC, for the third time this year. Asheville is nice. Good restaurants, street performers, too many tourists, overpriced food, overly complex choices in beer, well, it sort of gets old after a while.

Mmm... Kate's Colonial Home Kit, picked up at the picnic, for the raffle layout seemed to be a possible solution, along with some Electric Light Orchestra via Youtube. I wonder what housekeeping thought.

Bob



New Member Highlight:

This past spring the club welcomed two new members.

Tim Laswell:

Tim says he likes to model the Chessie System which narrows the time frame to mid 70s to early 80s. "I'll probably start out with a few TTrak modules but hope to move into the bigger modules as I grow my modeling skills. I had a 4x6 layout back in the 80s. But it got buried as I got into personal computers. I'm slowly finding all my old equipment that I had collected and been given. I'm working on bringing it up to modern standards."



Aaron Woodson:

Aaron likes to model the UP, SP, NS and Amtrak to name a few. Aaron also likes to railfan Amtrak near his home. He attended the Picnic but was unable to make Altoona. Please take a minute to introduce yourselves to our newest members and welcome them aboard.



Thank you Paul:

At the May meeting our president, Martin Myers (right), presented, Paul Diley (left), a plaque of appreciation from the club.



Cars for Sale: David Betz

Several previous month's cars are still available. So don't be shy, you know you want them. Step up and help the club while filling in your roster.

This month we have four new cars including an A/B set of locomotives. We are making the balance of those cars and locomotives available through the newsletter on a first come, first served basis. The cars will be sold at 50% of MSRP plus MD sales tax of 6%. All proceeds will go to the club. Over the next few months look for 4 pieces for sale each month. Please contact me and Alan to hold a particular piece for you and you can settle up with our treasurer Alan Del Gaudio and your car will be ready for you to pick up at the following month's meeting. So this month we have four brand new cars.

First up Micro Trains (MTL) 51' Rivet side Mechanical reefer.

MSRP\$27.90

Member Price \$13.95



Next up, Intermountain Wood Refrigerator

MSRP \$19.95

Member Price \$9.98



Intermountain F7A

MSRP\$109.95

Member Price \$54.97



Intermountain F7B

MSRP\$109.95

Member Price \$54.97



I have tested the Locomotives, ran forward and backwards on my test track, no issues.

Remember all proceeds will go to the club. This is a great deal on brand new cars.

All MSRP prices were either taken from the box itself, ModelTrainstuff.com, Hogtrainz, or from Trove Star.

LOOK FOR FOUR NEW OFFERINGS NEXT MONTH!!

Train Spotting: David Betz



BANTRAK Membership: Al Palewicz

BANTRAK does a significant amount of charitable activity, although we rarely think of it that way because we get pleasure out of it. When you think about it, that is as it should be with all giving from the heart.

What is our charitable activity? Our major participation is in the B&O Museum's (which is a charitable organization) Annual Festival of Trains. Our display has been a major draw for people to come to the Museum for many years, both recent and in the past. There are plenty more examples, this is just one.

Please contact Treasurer [Alan Del Gaudio](#) for more information regarding your membership status and roster questions or contact [Al Palewicz](#) with general questions.

Member Benefits:

- Sharing of your knowledge (railroading & modeling) with others of similar interests
- Access to railroading and modeling knowledge of other members
- National exposure and recognition of your endeavors in modeling
- Hands on activities: Club modules - track, wiring and scenery. Raffle layout - track and scenery Members' layouts
- Recognition as being part of a Nationally known club.

BANTRAK 2018 CALENDAR

Date	Event	Location	Contact	Type
Sept. 7-9	Kensington Railway Days	Contact Chris for Details	Chris Hyland.	T-Trak
Sept. 16th	Club Meeting	TBD	Martin Myers	Meeting
Sept. 22nd	Gaithersburg Museum	Contact Ed for Details	Ed Hyland	T-Trak
Sept. 29th	Ranson WV	Ranson WV	Chris Hyland	T-Trak
October 7th	SP Tower	Sykesville	Chris Hyland	T-Trak
October 21st	SP Tower	Sykesville	Chris Hyland	T-Trak
Oct.27th & 28th	Great Scale Show	Timonium Fair Grounds	Paul Diley	Show

BANTRAK CALL BOARD

CLUB WORK SESSION 2018

Contact Tim Nixon, Eric Payne, or Paul Diley for work session information.



BANTRAK was founded in 1983 as the Greater Baltimore N-Scale Associates. Begun as a “round robin” group to share skills and experiences, we have expanded our focus to include participation in many diverse activities to promote model railroading in general and N-Scale model railroading in particular. Activities include participation in local, regional and national shows, meets and conventions. BANTRAK membership includes membership in the national NTRAK organization.

The BANTRAK Newsletter is the official publication of Baltimore Area N-TRAK (BANTRAK), Inc. This is your newsletter! Please send articles, photos, and suggestions to newsletter@bantrak.net
Editor: David Betz

